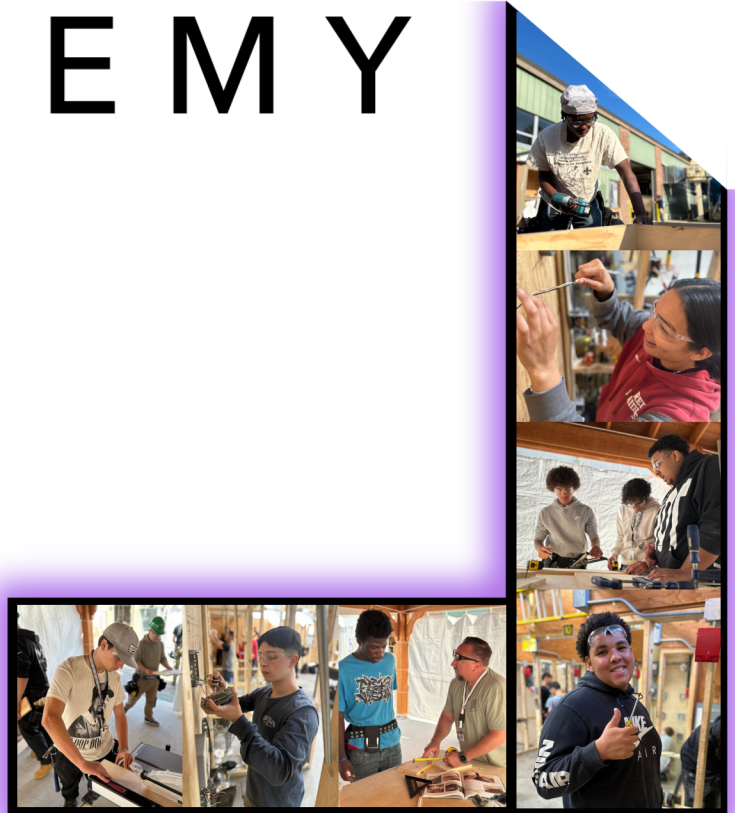




ACCEPTANCE PACKET

MVP ACADEMY

270 Westminster Street
Fitchburg, MA 01420



Letter *from* Leadership

Welcome to the Montachusett Vocational Partnership (MVP) Academy! We are excited to have you join us as we work to build upon the foundation that was established during our inaugural year of 2024-2025. Last year's program began with much excitement as we launched this much-needed initiative to provide workforce training to dozens of students from Fitchburg, Gardner and Narragansett Regional school districts.

Several years ago, administrators from each of your school districts joined with Monty Tech school leaders, to discuss a partnership that would allow students to take the initial steps towards a vocational career pathway. In September of 2024, after months of planning and finally securing grant funding that would make this collaboration possible, we were able to bring valuable vocational training to nearly 70 total students from Fitchburg, Gardner, and Narragansett Regional Schools.

Unlike what you may be used to, your vocational training will involve full-day, every other week hands-on lessons. You will have access to new, state-of-the-art technology and equipment in a brand-new facility. You will earn industry recognized credentials, required by so many of our industry partners in our area. You will be challenged to demonstrate both technical skills as well as those all-important "soft skills" necessary to succeed in today's workforce. You will train with licensed instructors who have worked for years in their trade and will have opportunities to meet with area employers who need trained, skilled workers to join their team.

Meanwhile, you will work with your sending districts' academic staff to ensure a well-rounded high school experience that will effectively prepare you for success in your chosen career pathway. We are proud to be a part of your educational journey and so excited to watch you grow and learn as carpenters and electricians.

While we are confident that your shared experience will be a positive one, there will undoubtedly be some individual challenges with regard to transitioning into this instructional model. This handbook will serve as an outline of expectations that you must be committed to following if your goal is to be successful at MVP Academy.

We wish you all the very best as you begin this vocational training journey towards a fulfilling post-graduate career.

Jonathan Thompson, Superintendent - Fitchburg Public Schools

Dr. Mark Pellegrino, Superintendent - Gardner Public Schools

Dr. Christopher Casavant - Narragansett Regional School District

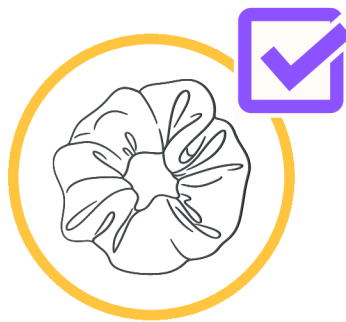
Thomas Browne, Superintendent-Director - Montachusett Reg. Voc. Tech. School District

MVP ACADEMY

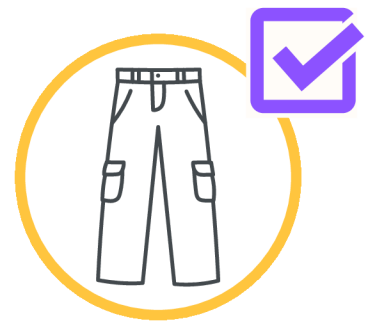
SHOP ATTIRE



T- Shirt
Long or Short Sleeve



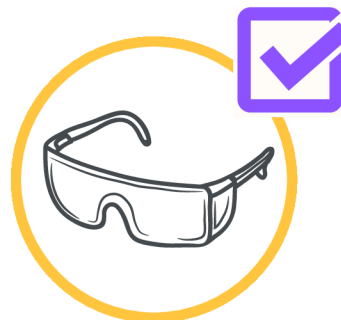
Hair
Restraint



Workpants
Jeans or Cargo Pants



Work Boots



Safety Glasses



Sandals – Slippers
Open Toed Shoes



Leggings – Sweat Pants
Yoga Pants – Pajama Pants



Loose Jewelry
Bracelets – Necklaces



Sleeveless Shirts
Tank Tops – Crop Tops

STUDENT IDS ARE REQUIRED.
SEE THE MVP HANDBOOK FOR ADDITIONAL INFORMATION.



MVP ACADEMY

Welcome to MVP!

We're thrilled to have you join us. We all remember those first-day jitters—walking into the unknown can be a bit overwhelming, but we are here to help make your transition as smooth as possible.

HOW DO I KNOW WHAT DAYS I WILL BE AT MVP?

You'll follow the Monty Tech calendar, including half days, no school, and other schedule changes **ONLY** on your vocational week! Schedules can sometimes differ between your sending school and MVP, so keep the Monty Tech calendar handy to stay on top of it all!

Juniors follow the “**B Week**” schedule. That's when you'll be at MVP Academy, while Seniors stay in their home districts for academics.

Seniors follow the “**A Week**” schedule. That's when you'll be at MVP Academy, and Juniors will stay in their districts for academic classes.

HOW WILL I BE TRANSPORTED TO MVP ACADEMY?

By Bus: Monty Tech will coordinate with your home district to assign you a Monty Tech bus stop near your home. You'll receive the exact location and pick-up time—make sure you're at the stop on time!

Student Drivers: If you're driving yourself, you'll park at Monty Tech and need to arrive early enough to catch the MVP Academy shuttle bus.

Keep in mind that parking is a privilege, and spaces are limited. If you want to drive, you'll need to submit a parking application. Parking permits are available through the MVP Academy Program Manager or on the MVP section of the Monty Tech website

WHAT DO I WEAR?

Each MVP trade has specific “shop attire” for trade week. The basics are jeans or work pants, a long- or short-sleeve t-shirt, boots, and a hair restraint. For all the details, check out the Dress Code section in the MVP Handbook!

DO I STILL GET BREAKFAST AND WHAT ABOUT LUNCH?

If you want breakfast, you can grab it in the Monty Tech cafeteria before hopping on the shuttle to MVP Academy.

For lunch, you'll pre-order from a weekly menu you'll get on Friday during your shop week. You can choose between a deli sandwich, a salad, or the hot lunch of the day—whatever works for you!

The MVP Handbook is a great resource for most of your questions, but we're always here to help! If you have any concerns or need assistance, feel free to send us an email. Just keep in mind that most of the MVP Team is only in a few days during the summer, so responses might take a little longer during that time.

meet the team at



MVP Academy Office Manager
Jasmine Silvera
silvera.jasmine@montytech.net



MVP Academy Bilingual Instructional Assistant
Jenilet Chlebeczek
chlebeczek.jenilet@montytech.net



MVP Academy Paraprofessional
Matthew Paul
paul.matthew@montytech.net



MVP Academy Electrical Instructor
John Whyte
whyte.john@montytech.net



MVP Academy Electrical Instructor
James Morris
morris.james@montytech.net



MVP Academy Carpentry Instructor
Matthew Giusti
giusti.matthew@montytech.net



MVP Academy Carpentry Instructor
Jacob Olson
olson.jacob@montytech.net



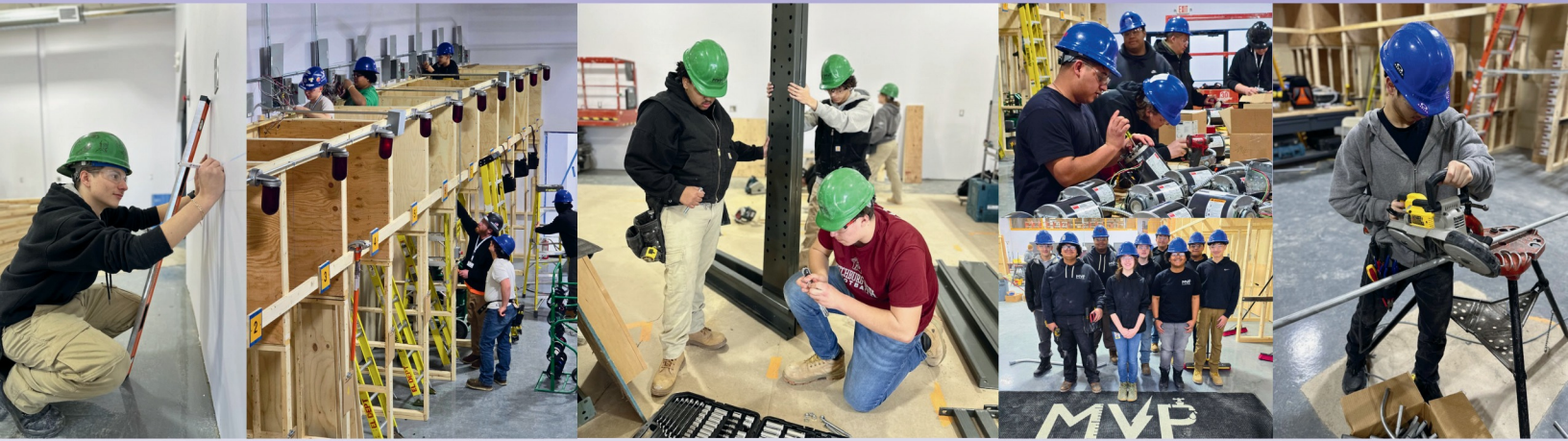
*Fitchburg High School
College and Career Coordinator*
Emma Brassard
brassarde@fitchburg.k12.ma.us



*Narragansett Regional High School
College, Career, & Internship Coordinator*
Katie Donnelly
kdonnelly@nrdsd.org



*Gardner High School
College & Career Program Coordinator*
Melissa Paine
painem@gardnerk12.org



2025

SEPTEMBER

- 1- LABOR DAY NO SCHOOL
- 8- JUNIOR CLASS FIRST DAY (B WEEK)
- 12- PROFESSIONAL DEVELOPMENT HALF DAY
- 15- SENIOR CLASS FIRST DAY (A WEEK)

THE JUNIOR CLASS WILL ATTEND MVP ON THE GREY HIGHLIGHTED WEEKS (B WEEKS) AND THE SENIORS WILL ATTEND MVP ON THE YELLOW HIGHLIGHTED WEEKS (A WEEKS)

OCTOBER

- 13- COLUMBUS DAY
- 24- TOUR DAY HALF DAY
- 27- TOUR DAY NO SCHOOL
- 27- OPEN HOUSE

NOVEMBER

- 11- VETERANS DAY NO SCHOOL
- 18- PARENT-TEACHER CONFERENCES HALF DAY
- 20- PARENT-TEACHER CONFERENCES HALF DAY
- 26- HALF DAY THANKSGIVING BREAK
- 27-28- THANKSGIVING DAY BREAK

DECEMBER

- 12- PROFESSIONAL DEVELOPMENT HALF DAY
- 23- HALF DAY WINTER BREAK
- 24-31- WINTER BREAK

SEPTEMBER

SUN	MON	TUE	WED	THU	FRI	SAT	
	1	2	3	4	5	6	
7	8	9	10	11	12	13	B
14	15	16	17	18	19	20	A
21	22	23	24	25	26	27	B
28	29	30					A

OCTOBER

SUN	MON	TUE	WED	THU	FRI	SAT	
			1	2	3	4	A
5	6	7	8	9	10	11	B
12	13	14	15	16	17	18	A
19	20	21	22	23	24	25	B
26	27	28	29	30	31		A

NOVEMBER

SUN	MON	TUE	WED	THU	FRI	SAT	
						1	A
2	3	4	5	6	7	8	B
9	10	11	12	13	14	15	A
16	17	18	19	20	21	22	B
23	24	25	26	27	28	29	A
30							

DECEMBER

SUN	MON	TUE	WED	THU	FRI	SAT	
	1	2	3	4	5	6	B
7	8	9	10	11	12	13	A
14	15	16	17	18	19	20	B
21	22	23	24	25	26	27	A
28	29	30	31				





2026

JANUARY

1-2- NEW YEARS EVE BREAK
19 MARTIN LUTHER KING JR. DAY

FEBRUARY

16- PRESIDENT'S DAY
16-20- FEBRUARY VACATION

MARCH

5- CAREER AWARENESS NIGHT
6- PROFESSIONAL DEVELOPMENT HALF DAY

APRIL

3- GOOD FRIDAY
20-24- SPRING BREAK

MAY

22- SENIORS LAST DAY
25- MEMORIAL DAY

JUNE

11- LAST DAY OF SCHOOL HALF DAY

JANUARY

SUN	MON	TUE	WED	THU	FRI	SAT
				X	X	3
4	5	6	7	8	9	10
11	12	13	14	15	16	17
18	X	20	21	22	23	24
25	26	27	28	29	30	31

FEBRUARY

SUN	MON	TUE	WED	THU	FRI	SAT
1	2	3	4	5	6	7
8	9	10	11	12	13	14
15	X	17	18	19	20	21
22	23	24	25	26	27	28

MARCH

SUN	MON	TUE	WED	THU	FRI	SAT
1	2	3	4	5	6	7
8	9	10	11	12	13	14
15	16	17	18	19	20	21
22	23	24	25	26	27	28
29	30	31				

APRIL

SUN	MON	TUE	WED	THU	FRI	SAT
			1	2	X	4
5	6	7	8	9	10	11
12	13	14	15	16	17	18
19	20	21	22	23	24	25
26	27	28	29	30		

MAY

SUN	MON	TUE	WED	THU	FRI	SAT
					1	2
3	4	5	6	7	8	9
10	11	12	13	14	15	16
17	18	19	20	21	22	23
24	25	26	27	28	29	30

JUNE

SUN	MON	TUE	WED	THU	FRI	SAT
	1	2	3	4	5	6
7	8	9	10	11	12	13
14	15	16	17	18	19	20
21	22	23	24	25	26	27
28	29	30				

